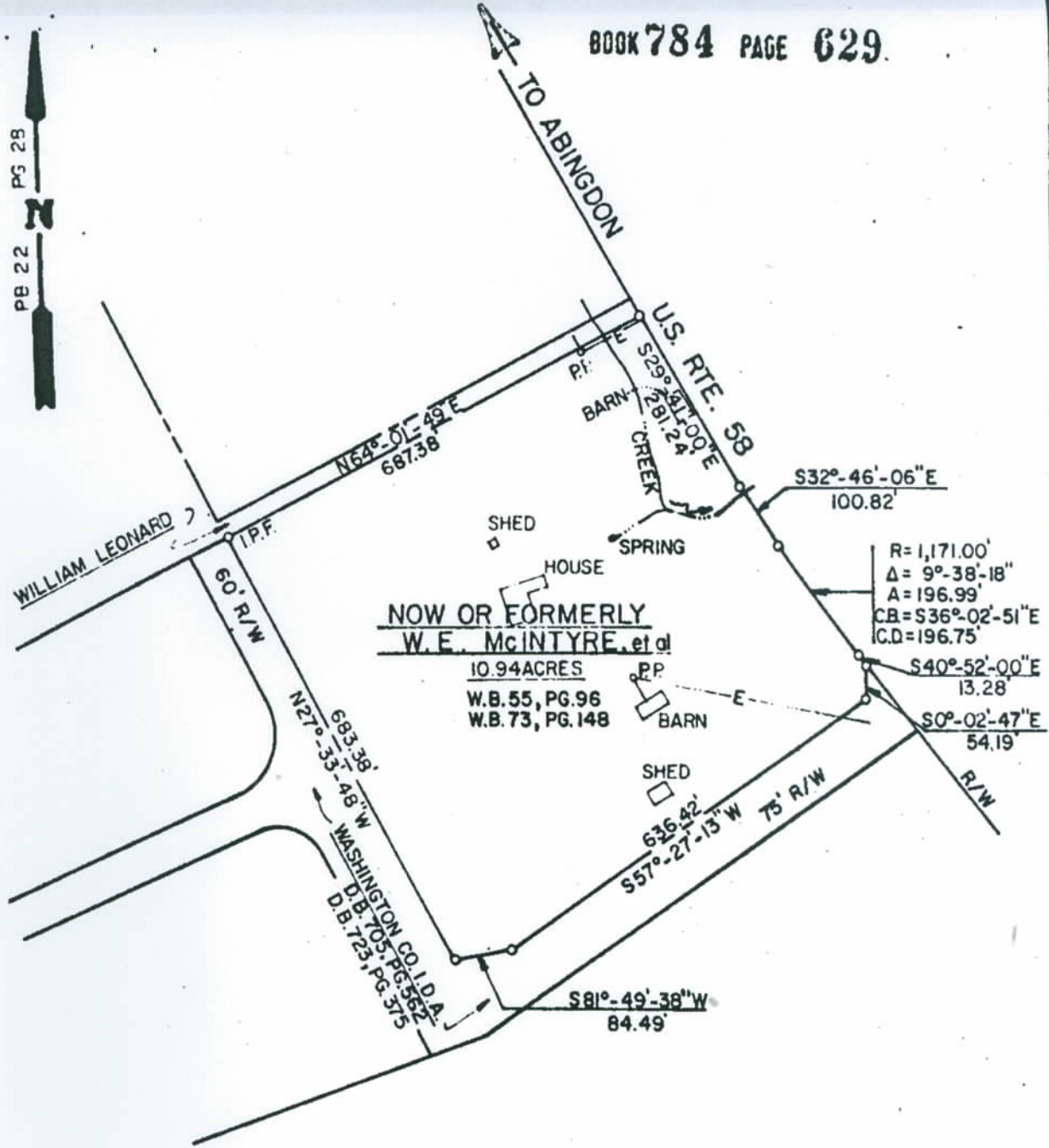
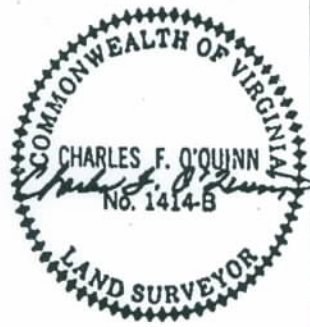


PB 22 PG 28



NOW OR FORMERLY
W. E. McINTYRE, et al
 10.94 ACRES
 W.B. 55, PG. 96
 W.B. 73, PG. 148

R=1,171.00'
 Δ= 9°-38'-18"
 A=196.99'
 CB=S36°-02'-51"E
 C.D.=196.75'



PLAT
 SHOWING A PORTION OF THE LANDS OF
NOW OR FORMERLY
W. E. McINTYRE, et al
 LOCATED IN THE MADISON DISTRICT OF
 WASHINGTON COUNTY, VIRGINIA

SCALE 1"=200'

DATE 4/26/89

Dewberry & Davis



626 South Main Street
 Marion, VA 24354
 703 783-7271

Architects
 Engineers
 Planners
 Surveyors

NOTES

- 1.) NO TITLE REPORT FURNISHED.
- 2.) I P F. = IRON PIN FOUND.
- 3.) - E - = OVERHEAD ELECTRICAL.
- 4.) P.P. = POWER POLE.

Date